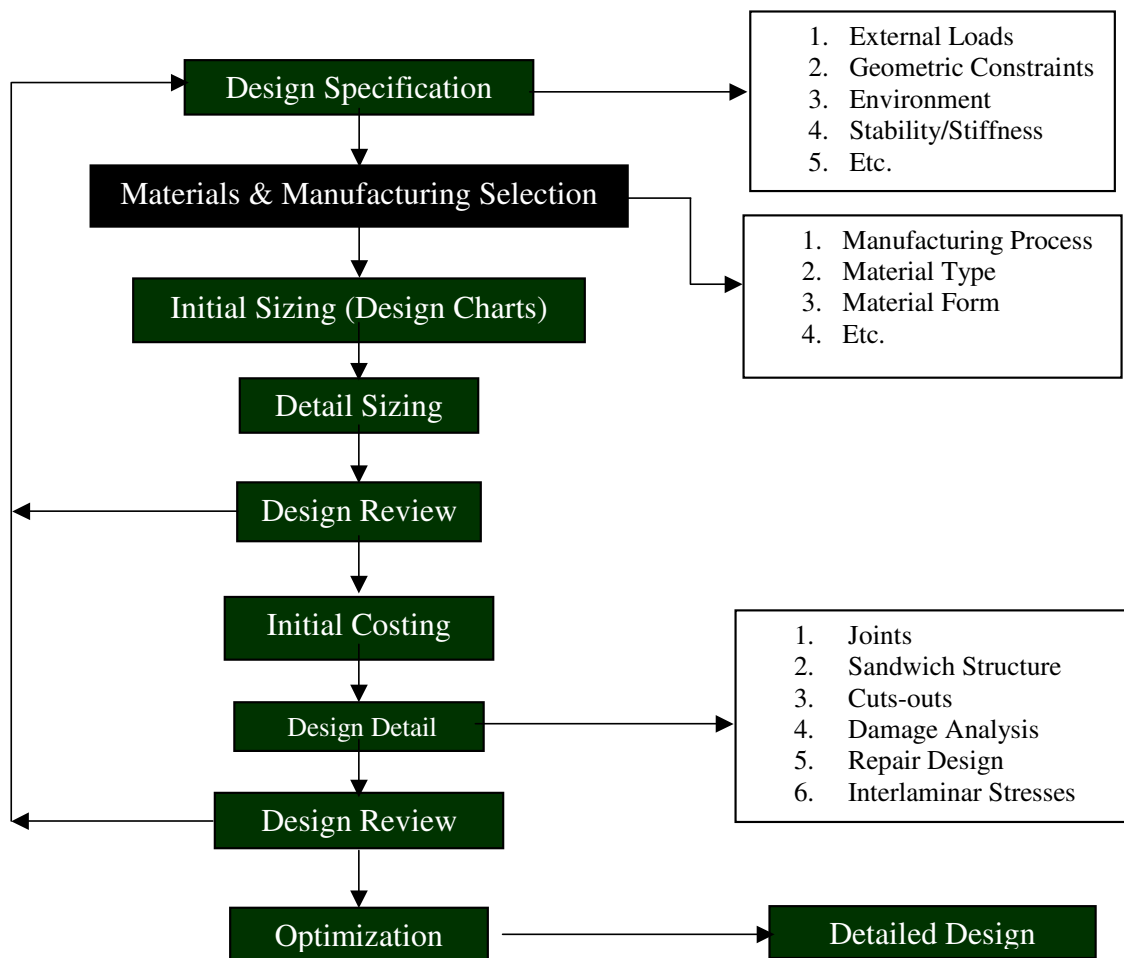


Composite Engineer's Viewpoint
Rik Heslehurst PhD, MEng, BEng(Aero), CPEng

Welcome to the introductory article by a composite structures design engineer. In future newsletters I will present a series of short articles on the principles and requirements in composite structures design. The articles are not intended to be difficult to understand, but help explain what must be considered when using composite materials for structural applications.

The following flowchart outlines what I intend to cover in future newsletters.



I hope that you will enjoy the articles, and more importantly learn something from them. I also welcome questions, comments and your point of view. Feel free to contact me via r.heslehurst@adfa.edu.au. I may publish your questions and comments, and my response in future newsletter.
